

Fairground Road Park

Master Plan

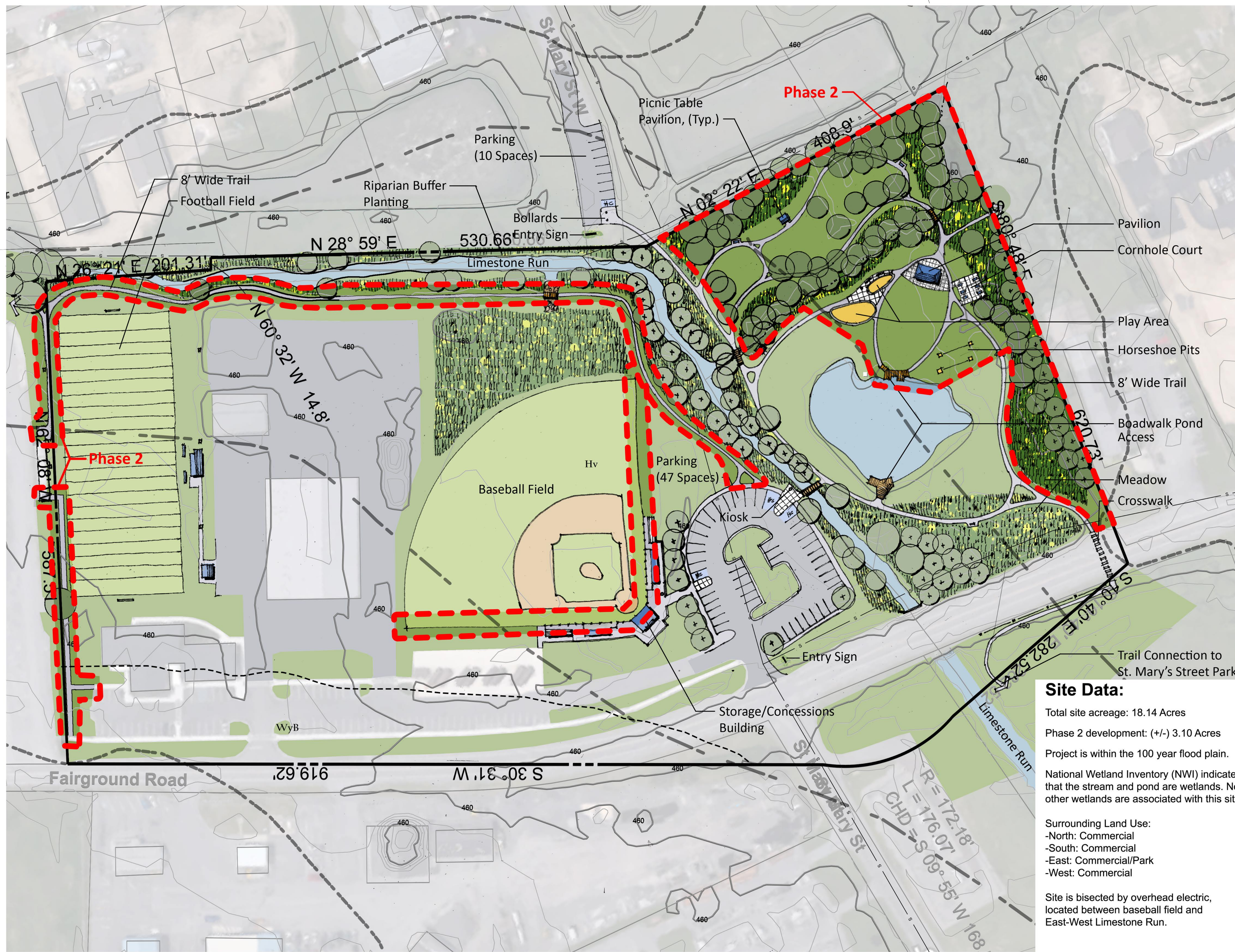
East Buffalo Township
Union County
Pennsylvania

Prepared For:
East Buffalo Township

Prepared By:

ysm
Landscape Architects
19 South Newberry Street
York, Pennsylvania 17401
(717) 812-9959 phone
(717) 812-9769 fax
www.ysmla.com

December 2018
Updated May 2022



Soil Legend	
WyB	Wyoming gravely sandy loam, 3 to 8 percent slopes
Hv	Holly silt loam, 0 to 3 percent slopes

Line Legend	
Soils Line	---
Floodway	---
0.1% Chance of Flood	---
0.2% Chance of Flood	---
Phase 2	---
Sanitary Line	---

Site Data:
 Total site acreage: 18.14 Acres
 Phase 2 development: (+/-) 3.10 Acres
 Project is within the 100 year flood plain.
 National Wetland Inventory (NWI) indicate that the stream and pond are wetlands. No other wetlands are associated with this site.
 Surrounding Land Use:
 -North: Commercial
 -South: Commercial
 -East: Commercial/Park
 -West: Commercial
 Site is bisected by overhead electric, located between baseball field and East-West Limestone Run.

NORTH

1 Acre

Scale: 1" = 50'-0"